

JUN -4 2014

**TOWN OF SWANTON
ZONING OFFICE
P.O. Box 711
Swanton, VT 05488
802-868-3325**

June 3, 2014

Energtek
Tim & Leslie Nulty
PO Box 1121
Jericho, VT 05465

Dear Mr. and Mrs. Nulty,

On behalf of the Swanton Development Review Board, I am writing to inform you of the decision reached at our meeting held on May 29, 2014. The Board voted to APPROVE #506-2014 Site Plan Approval Request of Energtek North Country, Inc. For your convenience the exact motion is below:

Mrs. Hoague made a motion, seconded by Mr. Liegey, to APPROVE #506-2014 Site Plan Approval Request of Energtek North Country, Inc. to construct a truck terminal for loading trucks with natural gas taken from the Vt. Gas Systems Transmission Main. The project will include a small office building and possible future accessory uses including a private vehicle repair shop for company vehicles, a retail natural gas vehicle dispensing station at Lafar St., Swanton Industrial Park "D". IND Industrial District. Motion carried.

Please contact Ronald Kilburn, Zoning Administrator, at 868-3325 with any further questions you may have.

Sincerely,

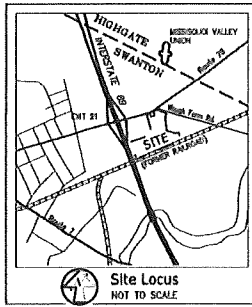
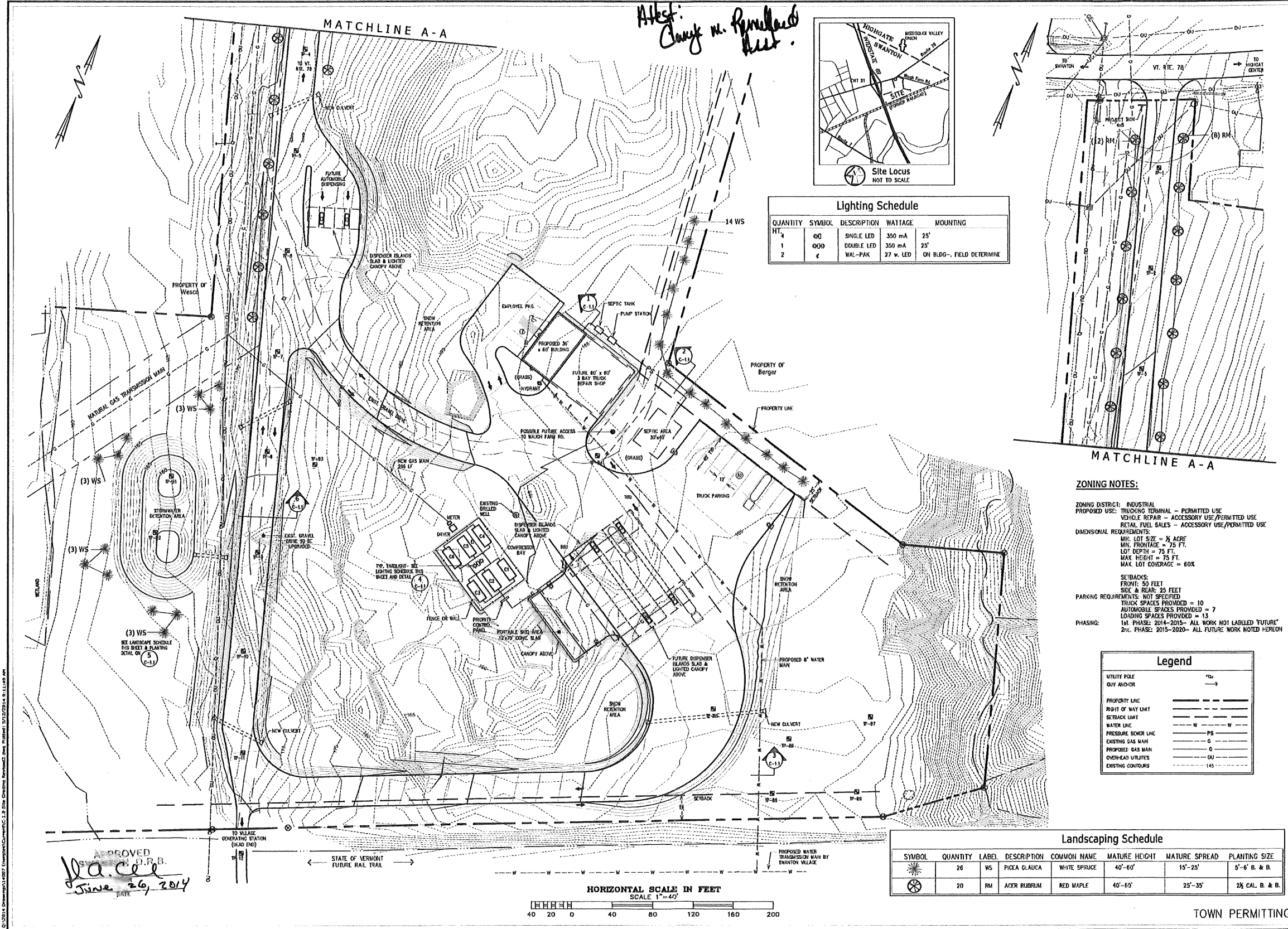


Joel Clark
Development Review Board Chairman

cc; Zoning Administrator
Town Administrator
Peter Cross, Cross Consulting Engineers
Tim Girard, Swanton Fire Chief

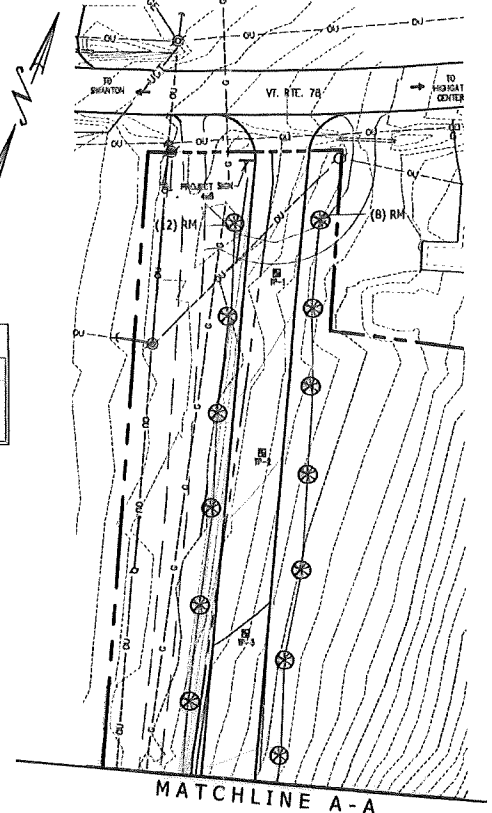
Town of Swanton received for record
 June 30, 2014 at 8:30AM.
 Plat Cabinet Map # 275

Attest:
Clayton M. Farnsworth
 Clerk



Lighting Schedule

QUANTITY	SYMBOL	DESCRIPTION	WATTAGE	MOUNTING
HT. 4	60	SINGLE LED	350 mA	25'
1	600	DOUBLE LED	350 mA	25'
2	4	WAL-PAK	27 w. LED	ON BLDG., FIELD DETERMINE



ZONING NOTES:

ZONING DISTRICT: INDUSTRIAL
 PROPOSED USE: TRUCKING TERMINAL - PERMITTED USE
 VEHICLE REPAIR - ACCESSORY USE/PERMITTED USE
 RETAIL FUEL SALES - ACCESSORY USE/PERMITTED USE

DIMENSIONAL REQUIREMENTS:
 MIN. LOT SIZE = 1/4 ACRE
 MIN. FRONT YARD = 75 FT.
 LOT DEPTH = 75 FT.
 MAX. HEIGHT = 75 FT.
 MAX. LOT COVERAGE = 60%

SE BACKS:
 FRONT: 50 FEET
 SIDE & REAR: 25 FEET

PARKING REQUIREMENTS: NOT SPECIFIED
 TRUCK SPACES PROVIDED = 10
 AUTOMOBILE SPACES PROVIDED = 7
 LOADING SPACES PROVIDED = 13

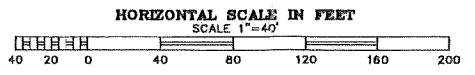
PHASING:
 1st PHASE: 2014-2015 - ALL WORK NOT LABELED 'FUTURE'
 2nd PHASE: 2015-2020 - ALL FUTURE WORK NOTED HEREON

Legend

UTILITY POLE	OU
QUI ANCHOR	Q
PROPERTY LINE	---
RIGHT OF WAY LIMIT	---
SETBACK LIMIT	---
WATER LINE	W
PRESSURE SEWER LINE	PS
EXISTING GAS MAIN	G
PROPOSED GAS MAIN	G
OVERHEAD UTILITIES	OU
EXISTING CONTOURS	145

Landscaping Schedule

SYMBOL	QUANTITY	LABEL	DESCRIPTION	COMMON NAME	MATURE HEIGHT	MATURE SPREAD	PLANTING SIZE
☼	26	WS	PICEA GLAUCA	WHITE SPRUCE	40'-60'	15'-25'	5'-6" B. & B.
☼	20	RM	ACER RUBRUM	RED MAPLE	40'-60'	25'-35'	2 1/2" CAL. B. & B.



APPROVED
D. C. C.
 June 26, 2014

PROJECT: 14007
 DATE: APRIL 29, 2014
 DESIGN: PHC
 DRAWN: WHP
 CHECKED: PHC
 APPROVED: PHC

TEL: 802-224-2111
 FAX: 802-224-9881
CROSS
 CONSULTING ENGINEERS, P.C.
 807 South St.
 St. Albans, Vermont 05478
 © COPYRIGHT 2014
 Green Consulting Engineers, P.C.

Site Plan

Energtek North Country Inc.
 Jericho Center, Vt.
Natural Gas Filling Station
 Park D Swanton, Vt.

SITE
C-1.0

TOWN PERMITTING
 SHEET 1 OF 2